

LOC I-LBX 109.1	APP CRS 175°	Rwy Idg THRE 25 Apt Elev 25
---------------------------	------------------------	--

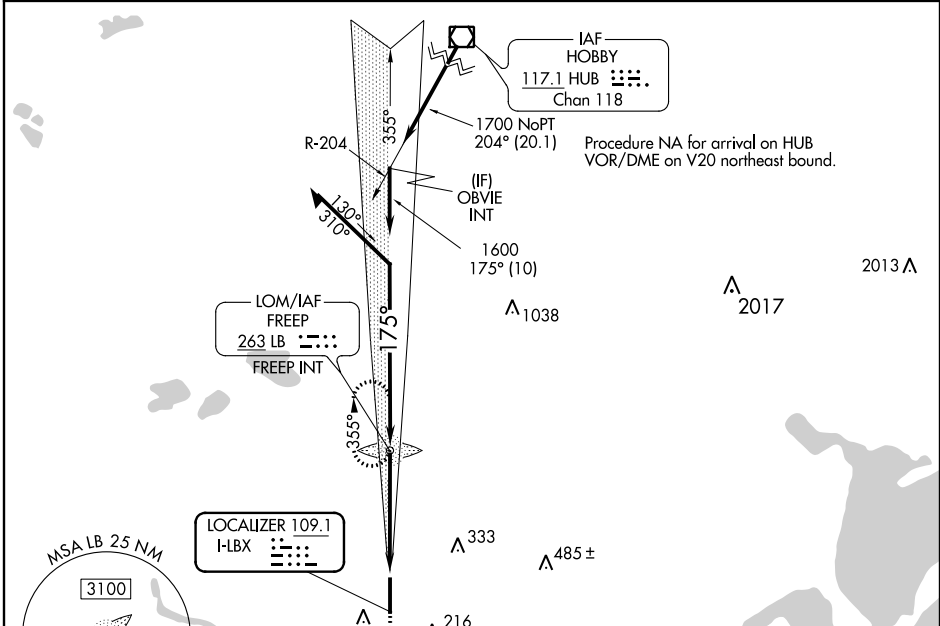
ILS or LOC RWY 17

ANGLETON/ TEXAS GULF COAST RGNL (L.B.X)

⚠ Circling NA East of Rwy 17-35. When local altimeter setting not received, use William P. Hobby altimeter setting and increase all DA 81 feet and all MDA 100 feet, increase S-LOC 17 Cats C/D visibility to 1/4, increase Circling Cat C to 1/8. ADF required. For inoperative MALSR, when using William P Hobby altimeter setting, increase S-ILS 17 visibility to 2/3 all Cats.

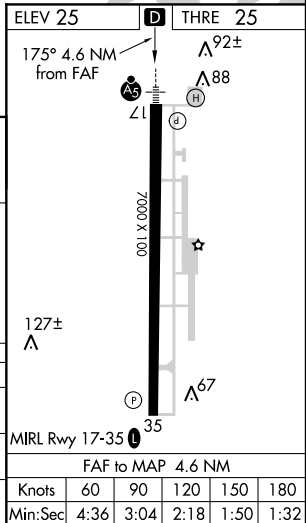
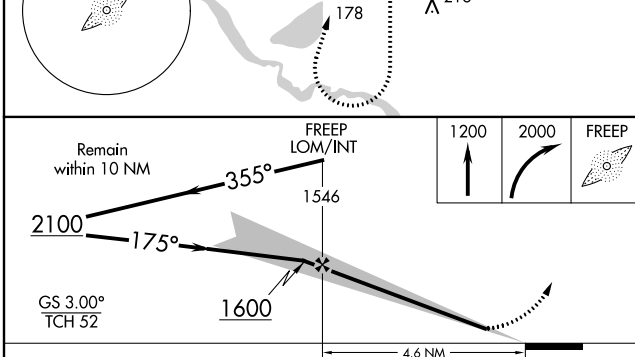
MALSR MISSED APPROACH: Climb to 1200, then climbing right turn to 2000 direct FREEP LOM and hold.

ASOS 119,925	HOUSTON APP CON 134.45 284.0	CLNC DEL 125.2	UNICOM 123.0 (CTAF) 0
------------------------	--	--------------------------	---------------------------------



SC-5, 30 MAY 2013 to 27 JUN 2013

SC-5, 30 MAY 2013 to 27 JUN 2013



CATEGORY	A	B	C	D
S-ILS 17	225-1/2 200 (200-1/2)			
S-LOC 17	500-1/2	475 (500-1/2)	500-1	475 (500-1)
CIRCLING	500-1	475 (500-1)	500-1/2	580-2 475 (500-1/2) 555 (600-2)